

Customer	Project	Page	1 / 1
Customer no.	Project no.	Date	28/04/2014
Contact	Position	SERIES A, AX	
Care of	Location		

**A 500** 11 6136.0150  
 Variable speed Mini Energy Pump

**Requested data**  
 Flow 0 m³/h  
 Head 0 m  
 Fluid Water, pure  
 Temperature 20 °C  
 Working pressure 16 bar

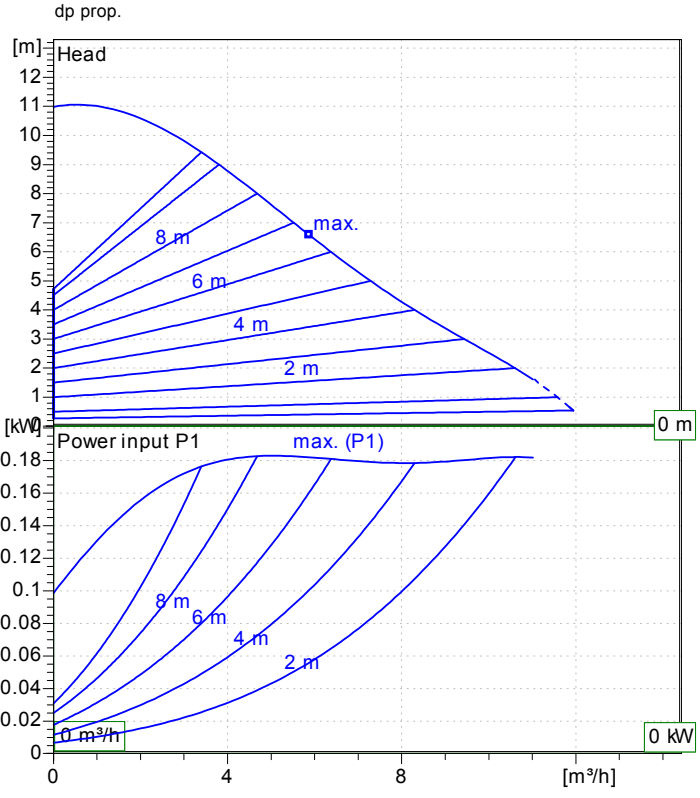
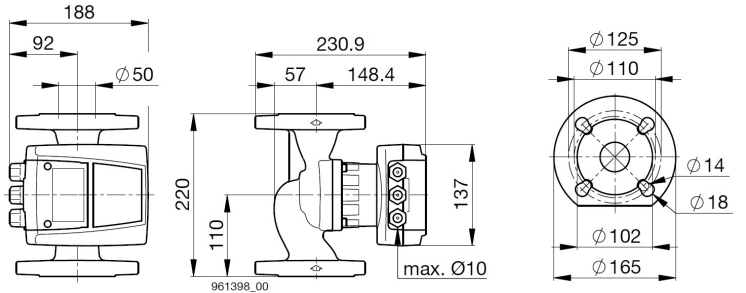
**Operating data**  
 Flow  
 Head  
 Power input P1  
 Permitted working pressure 16 bar  
 Min. fluid temperature 15 °C  
 Max. fluid temperature 95 °C

**Required working pressure**  
 Values are valid for hot water,  
 Altitude 500m above sea level.  
 Changing of required working pressure at +/- 0.01bar  
 per +/- 100m altitude above sea level.  
 75 °C 95 °C  
 0.2 bar 0.65 bar

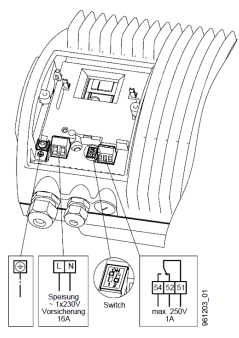
**Pump data**  
 Installation dimension DN 50 x 220  
 Rated voltage 1~230 V 50 Hz  
 Rated current 1.25 A  
 Rated power P2 0.174 kW  
 Insulation class F  
 Degree of protection IP44  
 Weight 18.5 kg

**Short-circuit-proof motor doesn't  
 required overload protection.**

**Materials**  
 Pump casing Cast iron  
 Impeller Plastic  
 Can Chrome-Nickel Steel  
 O- Ringe EPDM 75  
 slide bearing Ceramic  
 Shaft Chrome-Nickel Steel



**Electrical connection**



51-54 fault or operating message (switchable) as NO contact: closes for fault/operation Contact loading max. 250 V~, 1 A  
 51-52 fault or operating message (switchable) as NC contact: opens for fault/operation Contact loading max. 250 V~, 1 A

Remarks: